

**CTBUH 2010**  
**World Conference - INDIA**  
 Remaking Sustainable Cities in the Vertical Age  
 3rd - 5th February 2010 - Renaissance Hotel & Convention Centre, Mumbai  
 www.ctbuh2010-india.com

**Place Making: Urban Design & the Tall Building**

Stephan C. Reinke FAIA RIBA  
 Director  
 Stephan Reinke Architects  
 London, United Kingdom

Stephan Reinke Architects

01 – Urban Density

Stephan Reinke Architects

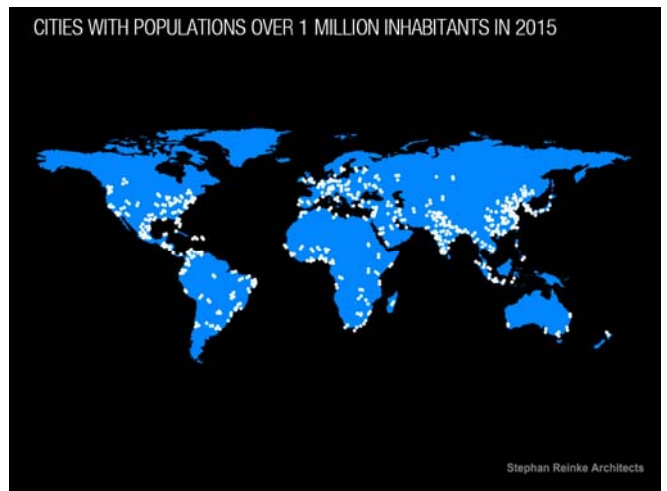
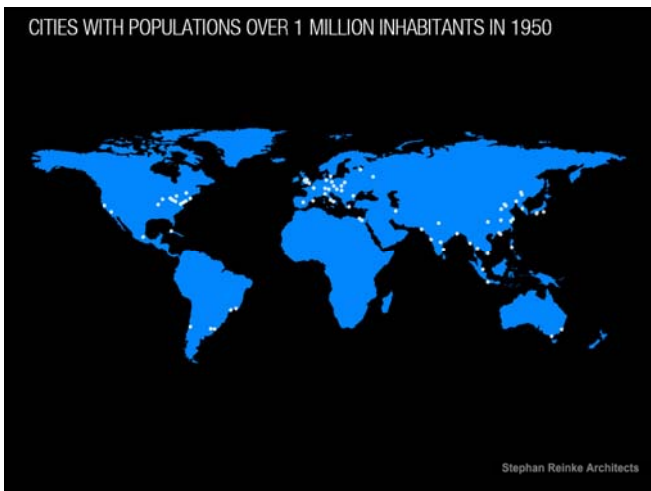
URBAN DENSITY IS A GLOBAL ISSUE

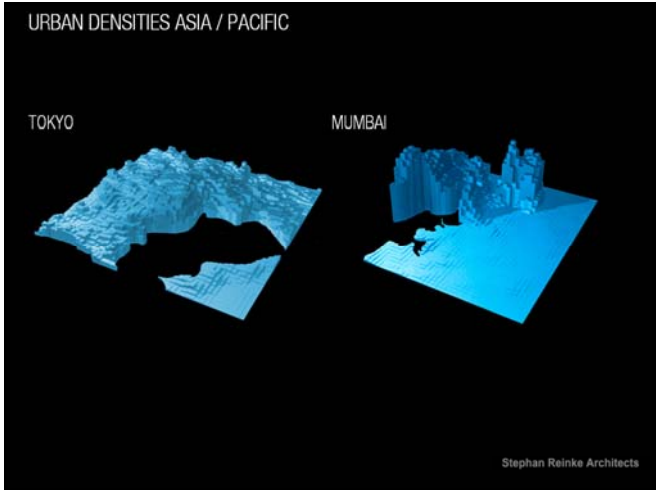
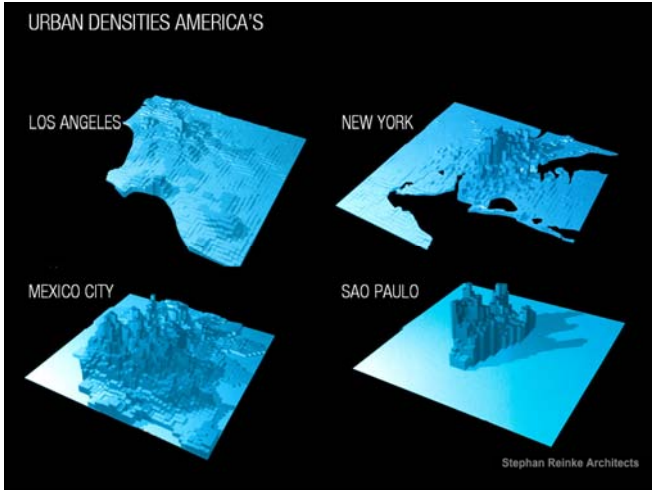
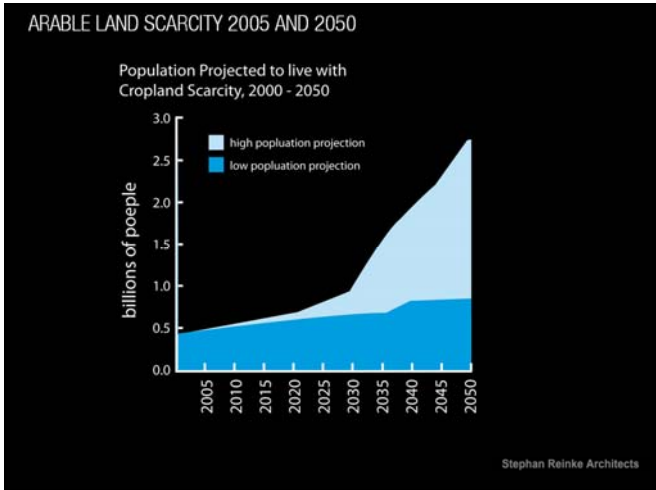
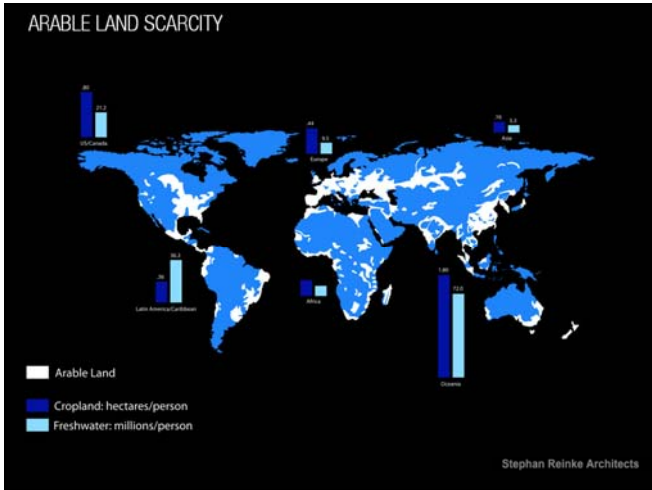
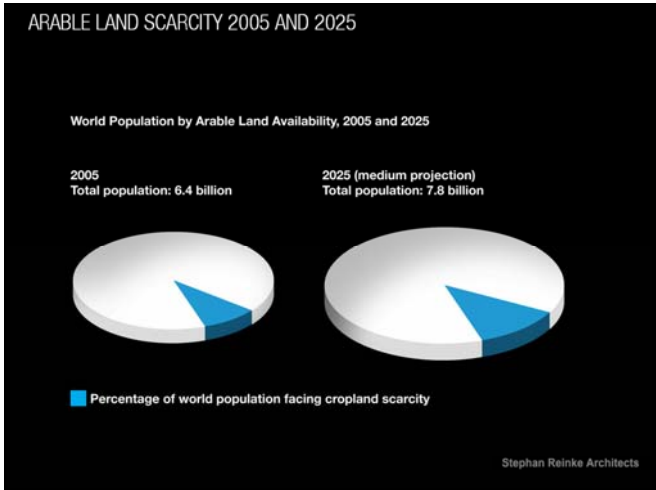
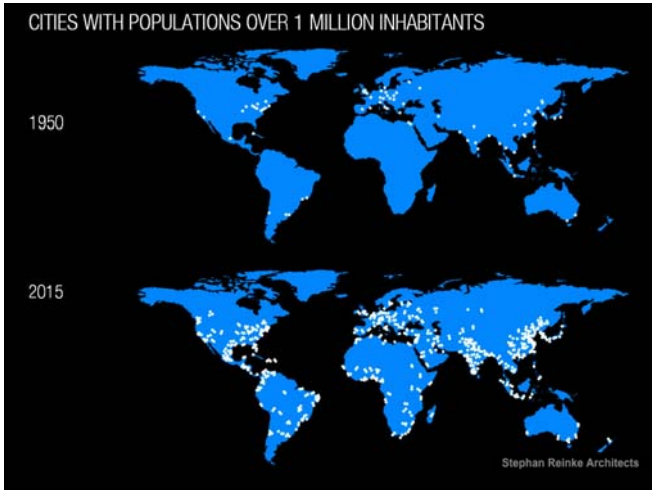
EUROPE  
 THE AMERICAS  
 ASIA / PACIFIC  
 MIDDLE EAST

Stephan Reinke Architects

EFFECTIVE USE OF SPACE IN A DENSE ENVIRONMENT IS CRITICAL

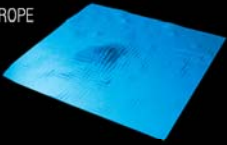
Stephan Reinke Architects



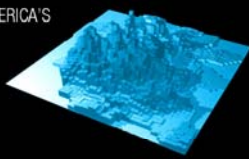


URBAN DENSITIES GLOBAL

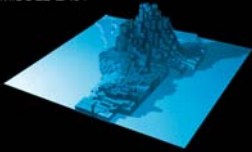
EUROPE



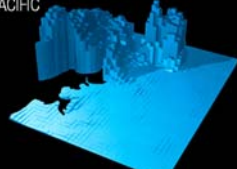
AMERICA'S



MIDDLE EAST



ASIA / PACIFIC

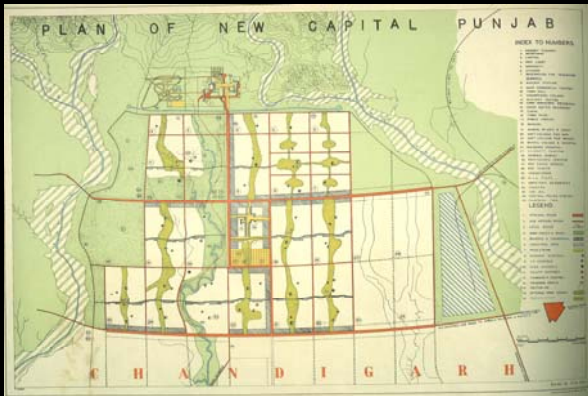


Stephan Reinke Architects

02 – A City defined by People Places



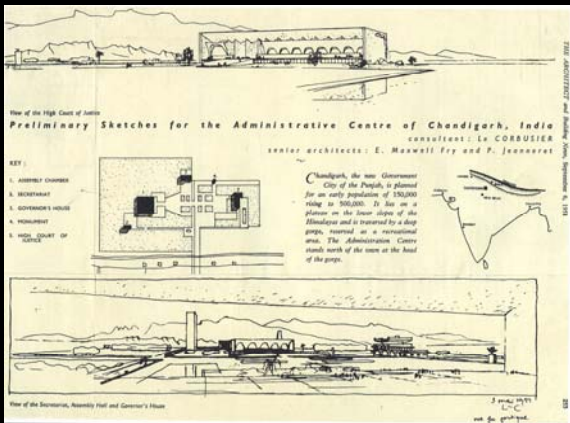
Stephan Reinke Architects



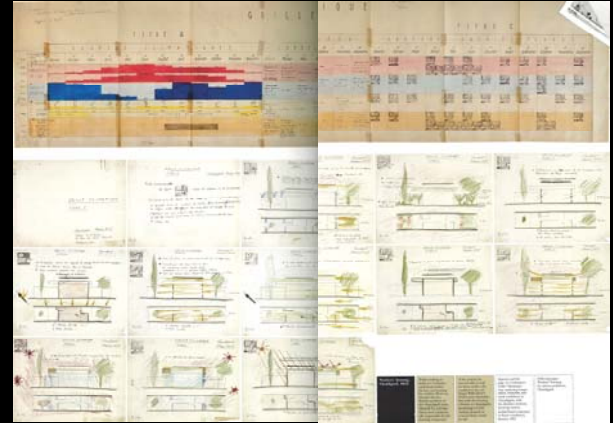
Stephan Reinke Architects



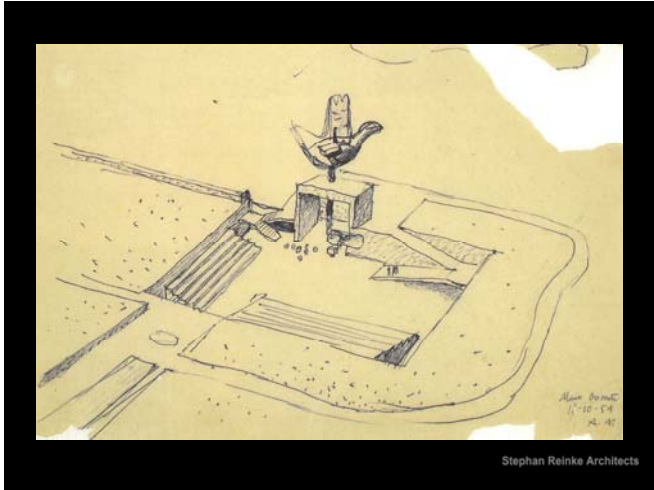
Stephan Reinke Architects



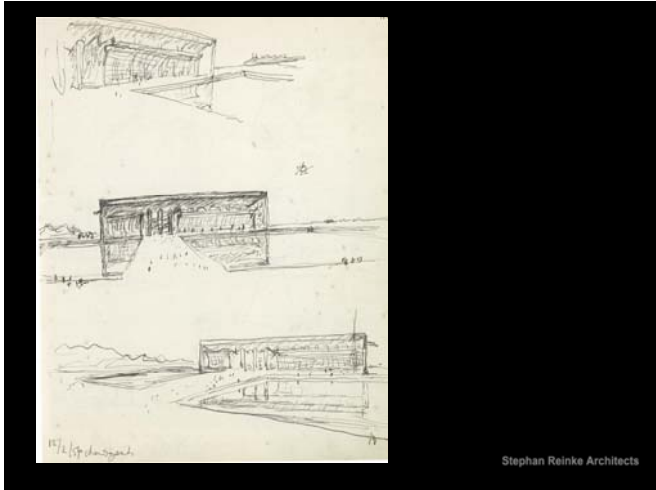
Stephan Reinke Architects



Stephan Reinke Architects



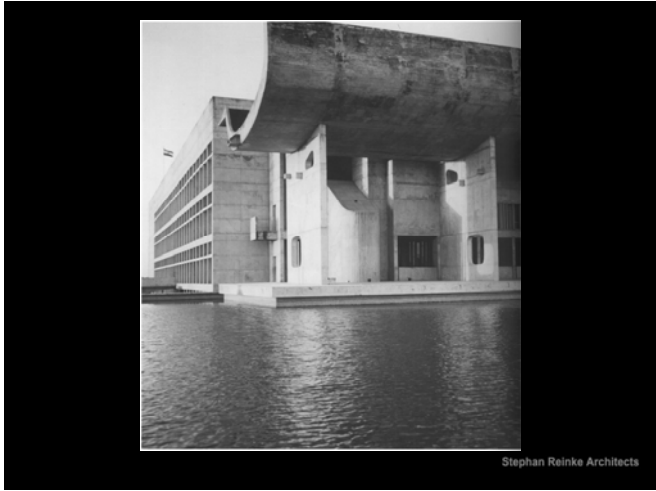
Stephan Reinke Architects



Stephan Reinke Architects



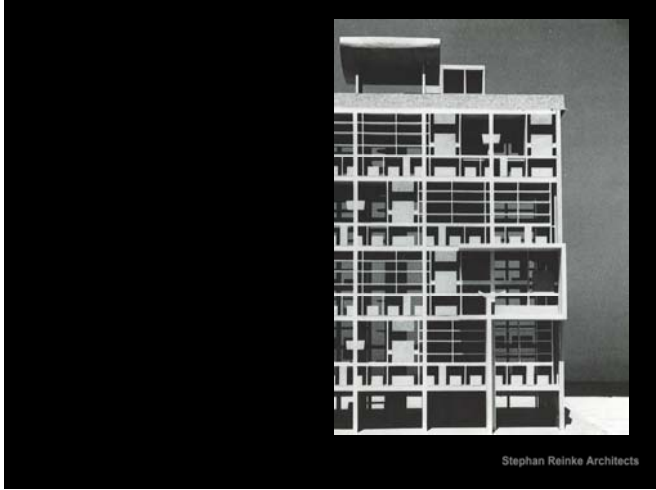
Stephan Reinke Architects



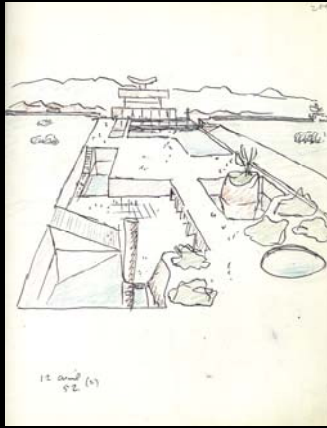
Stephan Reinke Architects



Stephan Reinke Architects



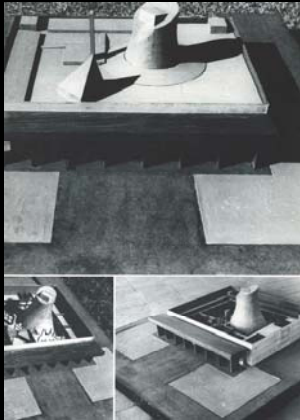
Stephan Reinke Architects



Stephan Reinke Architects



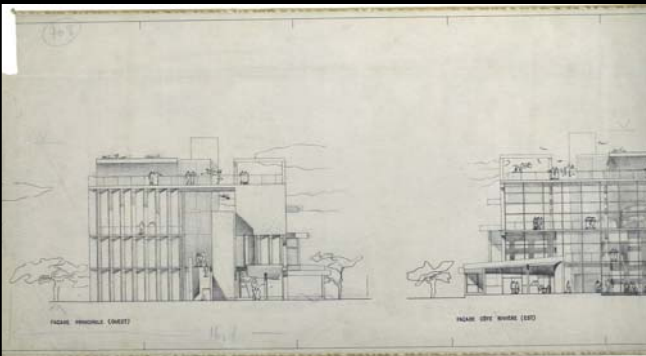
Stephan Reinke Architects



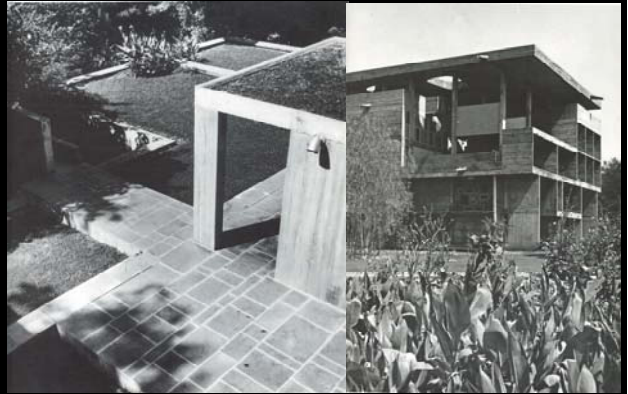
Stephan Reinke Architects



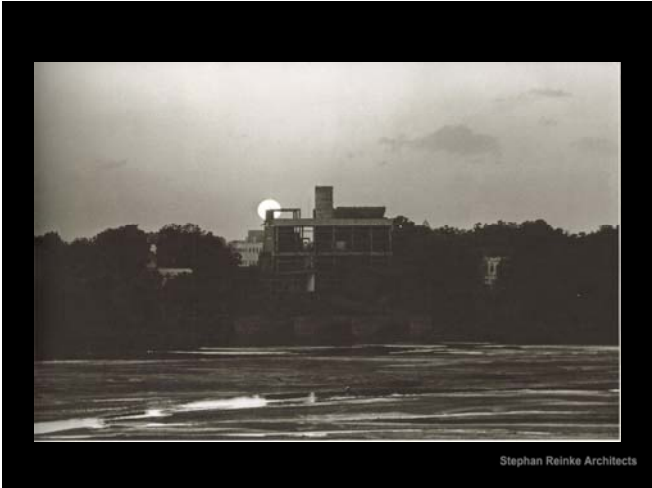
Stephan Reinke Architects



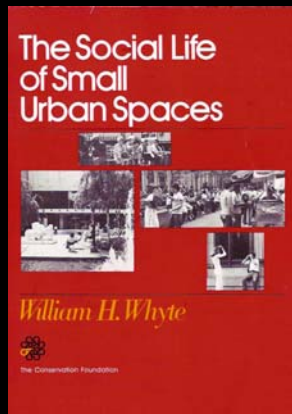
Stephan Reinke Architects



Stephan Reinke Architects



03 – Social Life of Small Urban Places  
by William H. Whyte



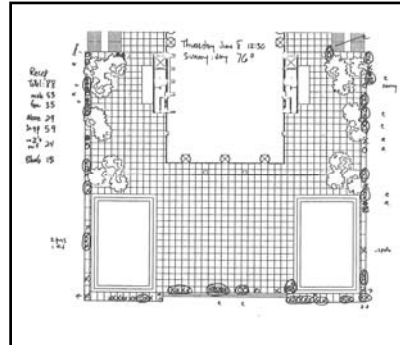
Stephan Reinke Architects

- The Life of Plazas
- Sitting Space
- Sun, Wind, Trees, Water
- Food
- The Street
- The "Undesirables"
- Effective Capacity
- Indoor Spaces
- Concourses and Megastructures
- Smaller Cities and Places
- Triangulation



One of New York's best corners is 49<sup>th</sup> Street and the Avenue of the Americas, alongside the McGraw-Hill Building. This corner has all the basics: sitting space, a food vendor and a heavy pedestrian flow, the middle of which is a favourite place for conversations.

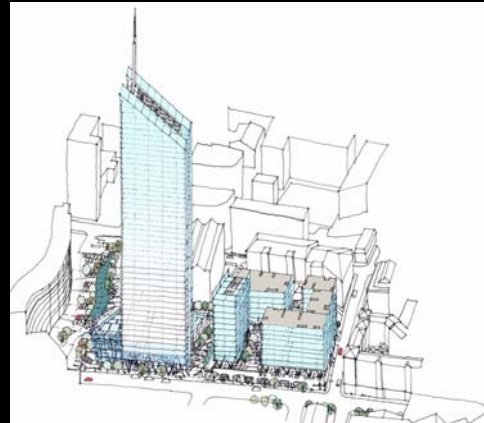
Stephan Reinke Architects



This is a typical sighting map. We found that one could map the location of every sitter, whether male (X) or female (O), alone or with others (XO), in about five minutes, little more time than a simple head count would take.

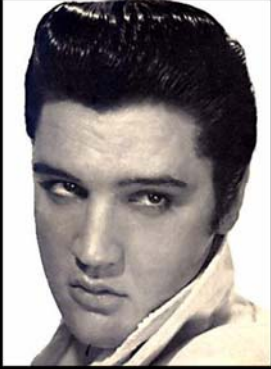
Stephan Reinke Architects

04 – Case Studies  
Piccadilly Tower, Ducie Street Redevelopment  
Manchester

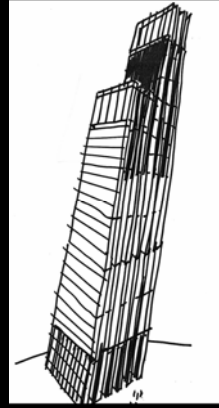


Stephan Reinke Architects

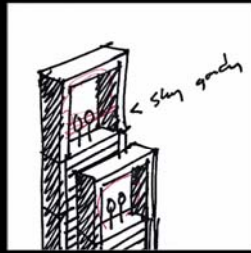
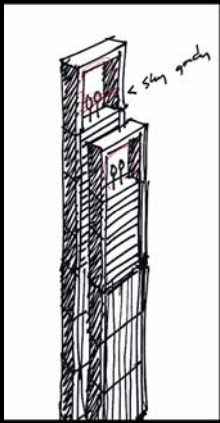
"Ten Tops"



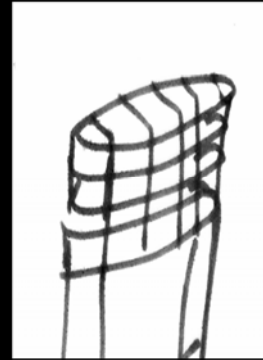
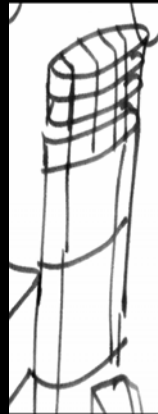
Stephan Reinke Architects



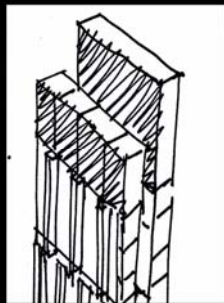
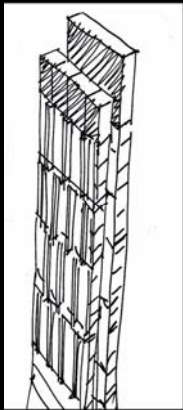
Stephan Reinke Architects



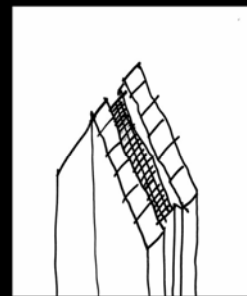
Stephan Reinke Architects



Stephan Reinke Architects

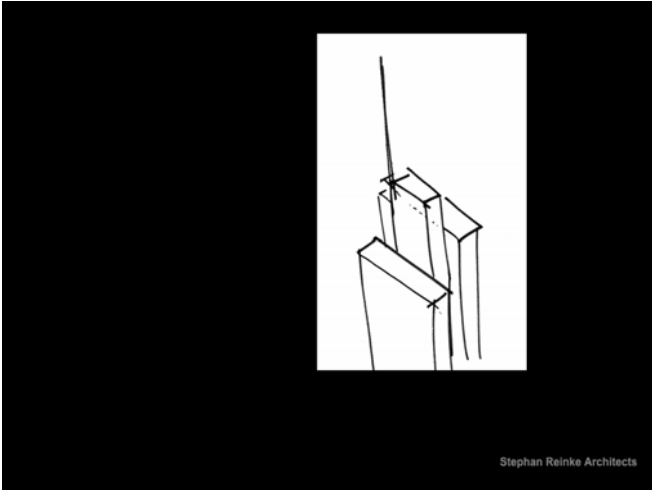
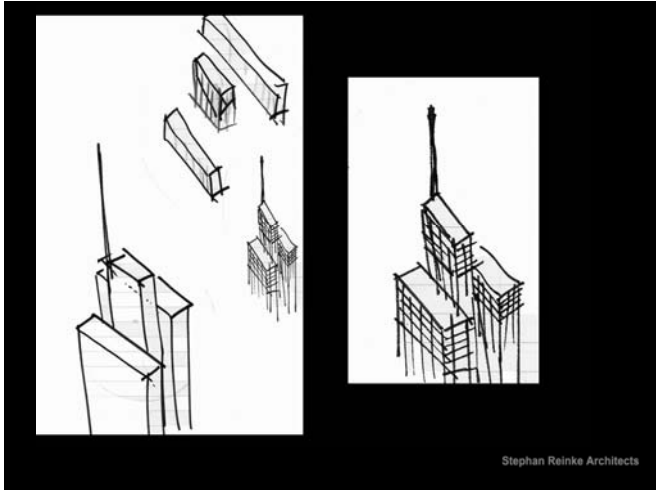
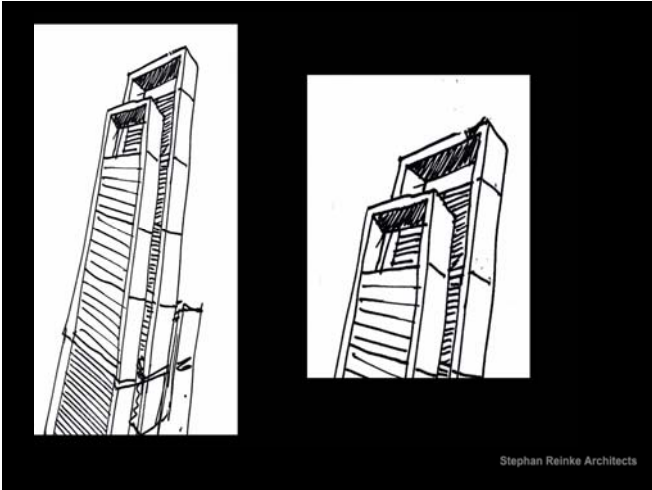


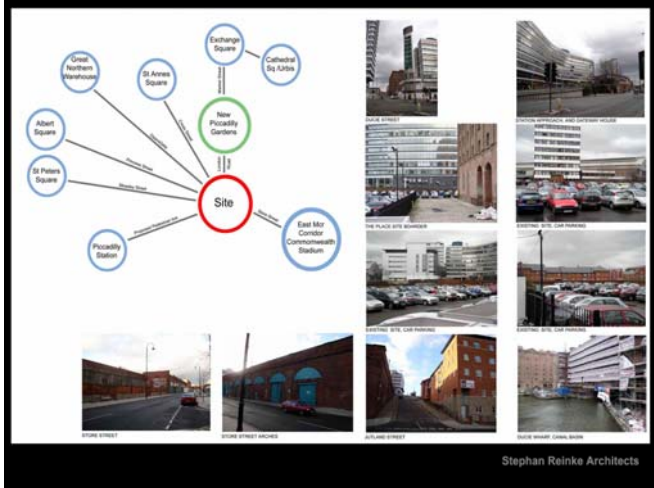
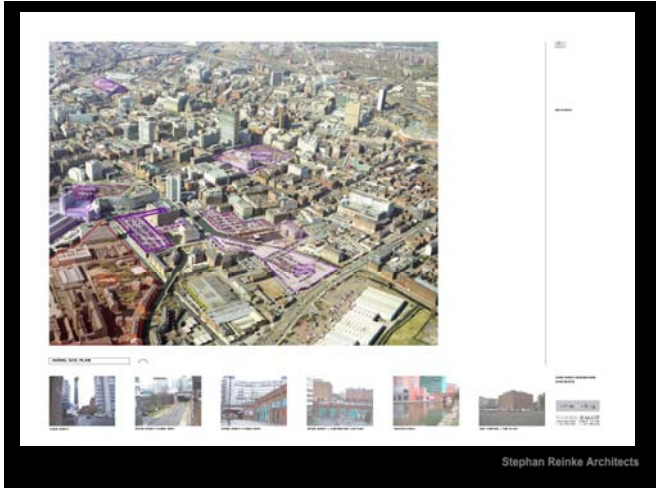
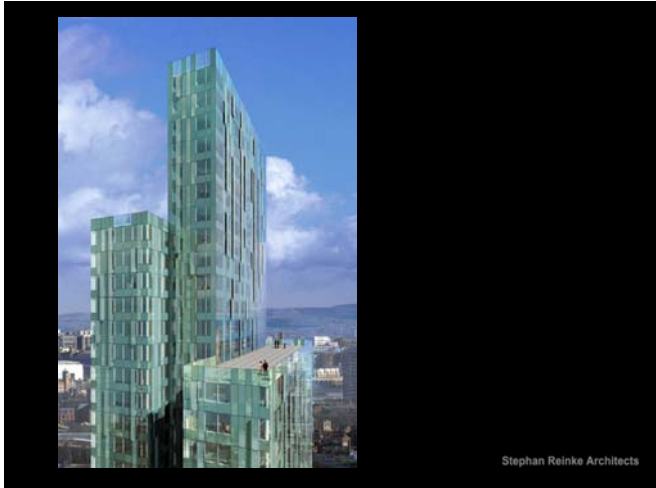
Stephan Reinke Architects

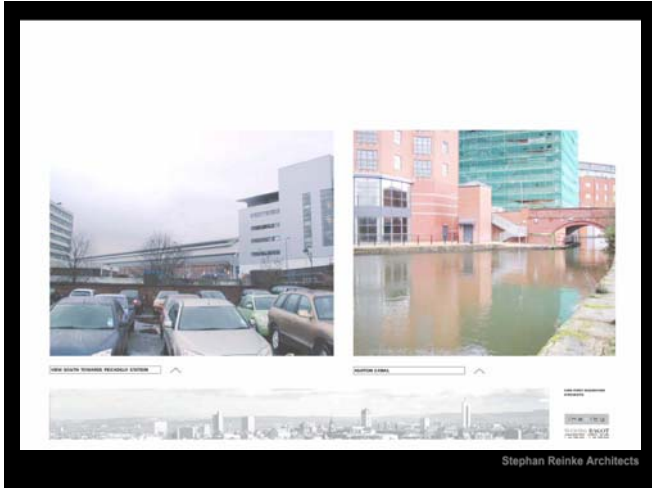


Stephan Reinke Architects

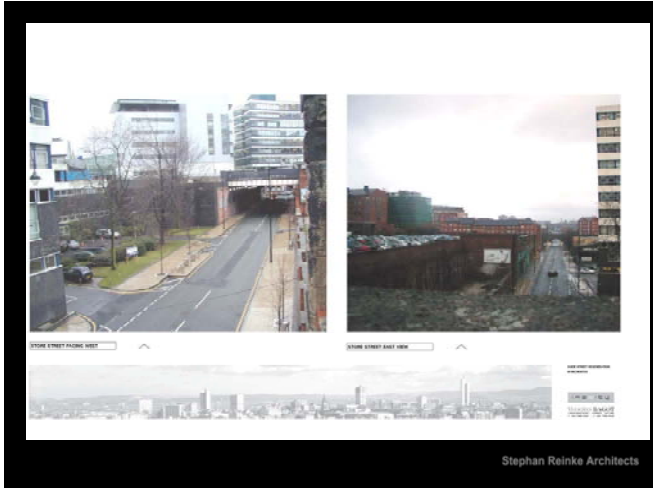




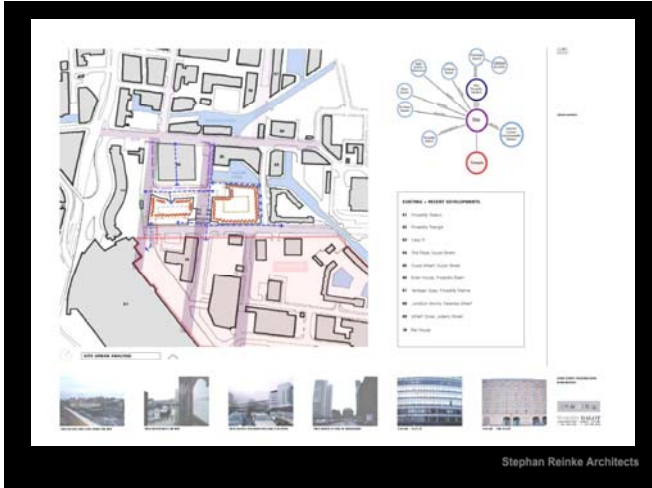




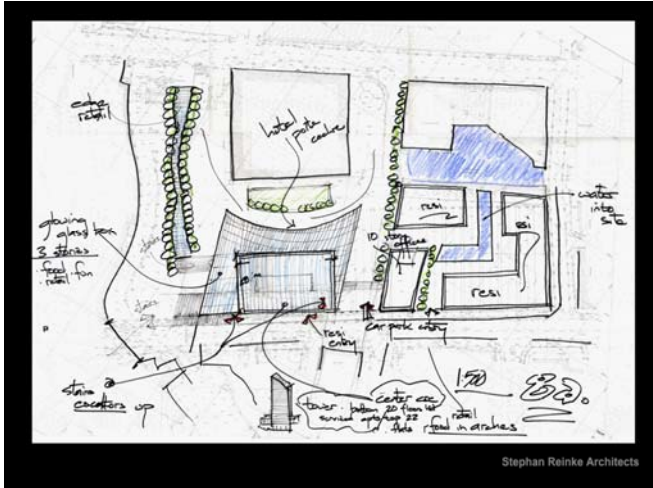
Stephan Reinke Architects



Stephan Reinke Architects



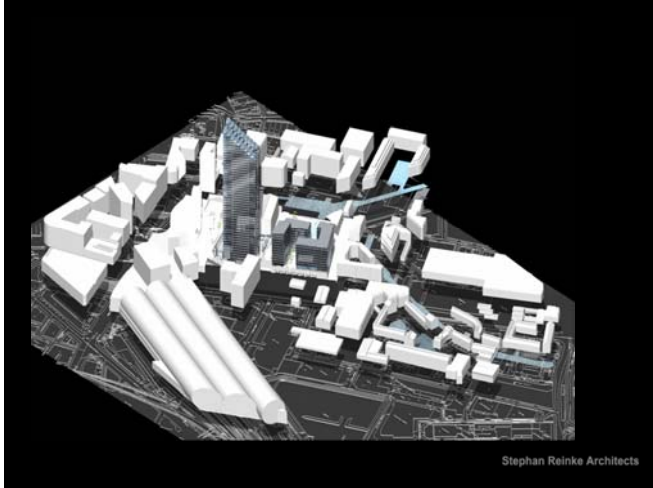
Stephan Reinke Architects



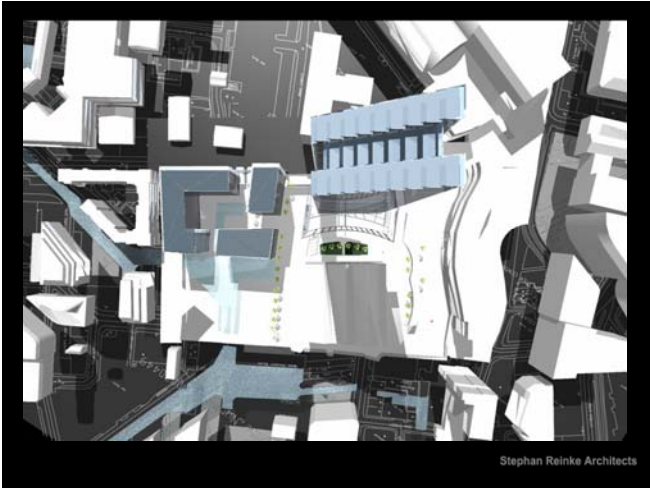
Stephan Reinke Architects



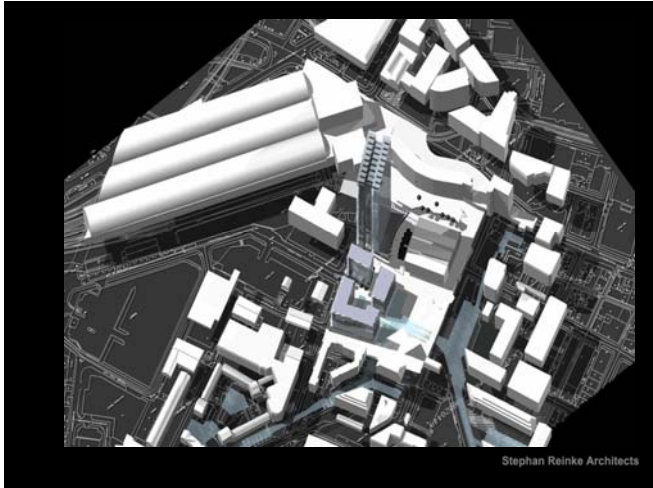
Stephan Reinke Architects



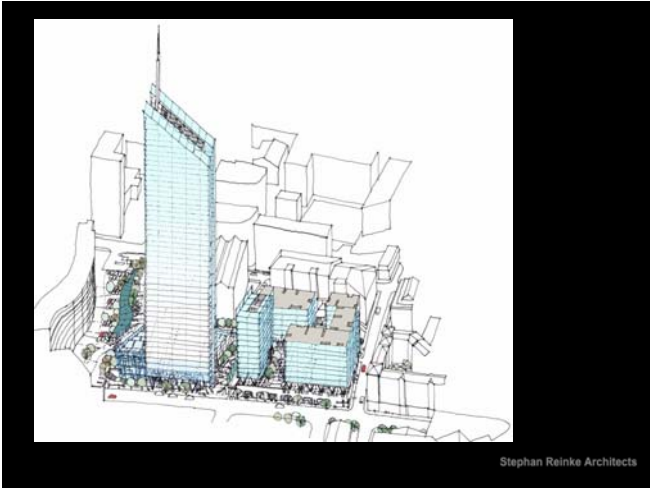
Stephan Reinke Architects



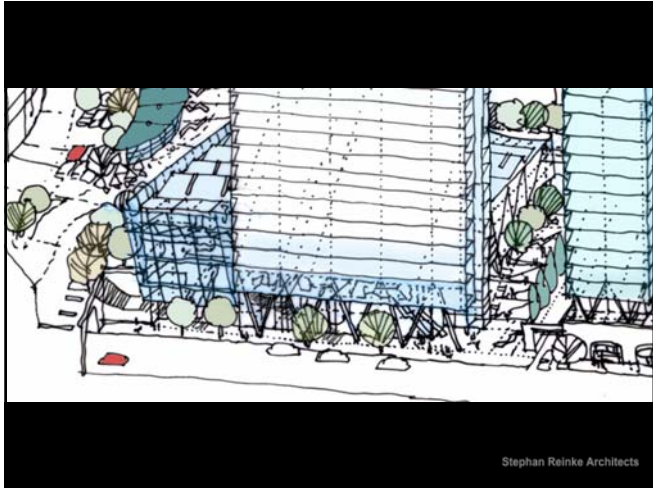
Stephan Reinke Architects



Stephan Reinke Architects



Stephan Reinke Architects



Stephan Reinke Architects



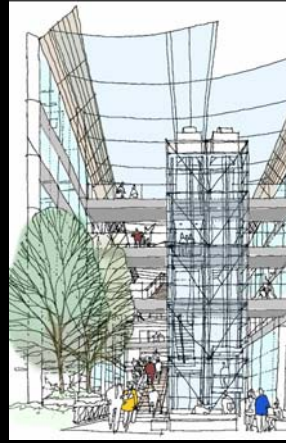
Stephan Reinke Architects



Stephan Reinke Architects



Stephan Reinke Architects



Stephan Reinke Architects



Stephan Reinke Architects



Stephan Reinke Architects

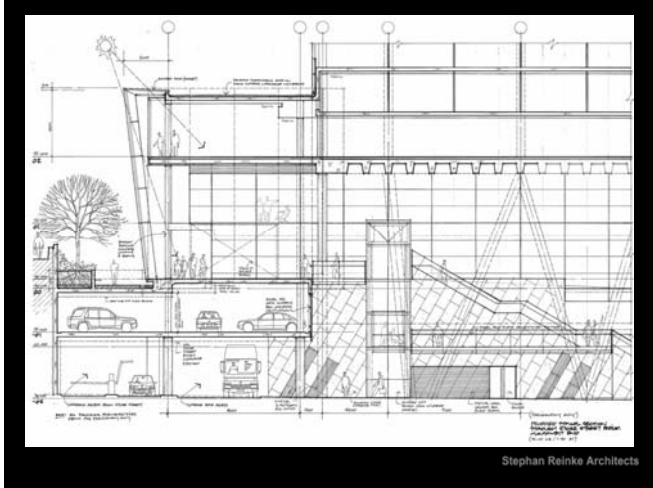
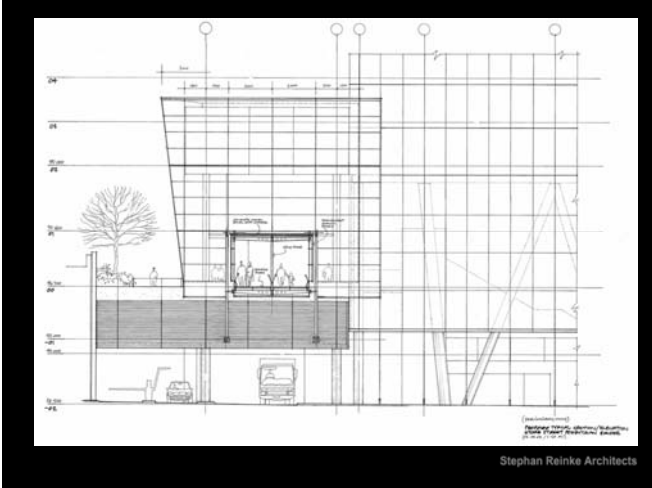
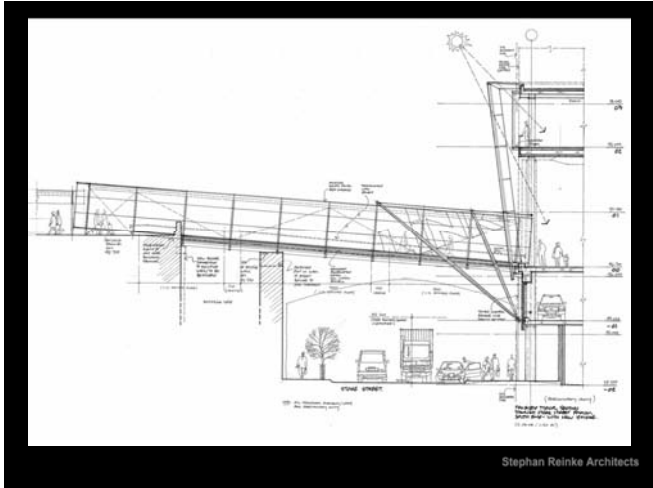
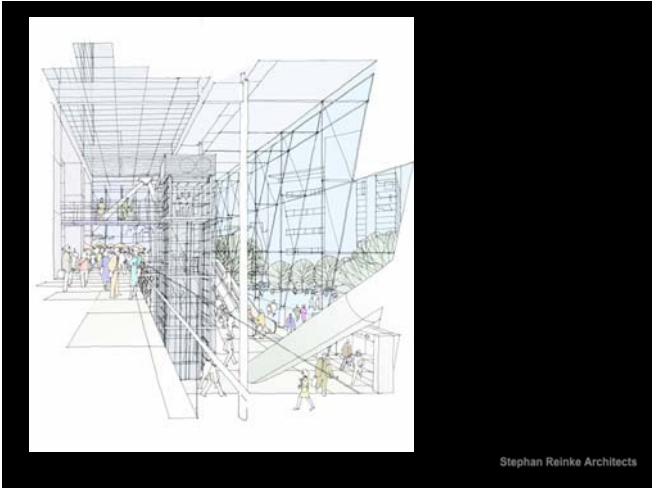


Stephan Reinke Architects

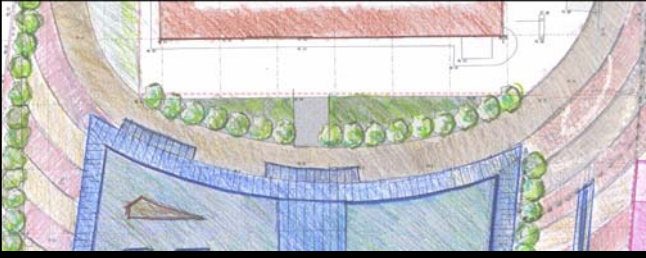
### " The Critical Link "



Stephan Reinke Architects



" The Entry "



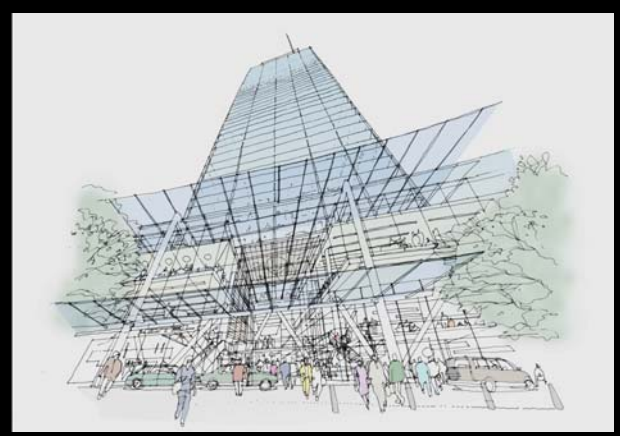
Stephan Reinke Architects



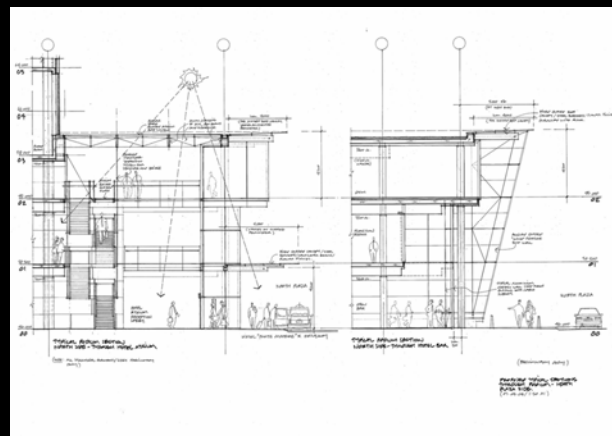
Stephan Reinke Architects



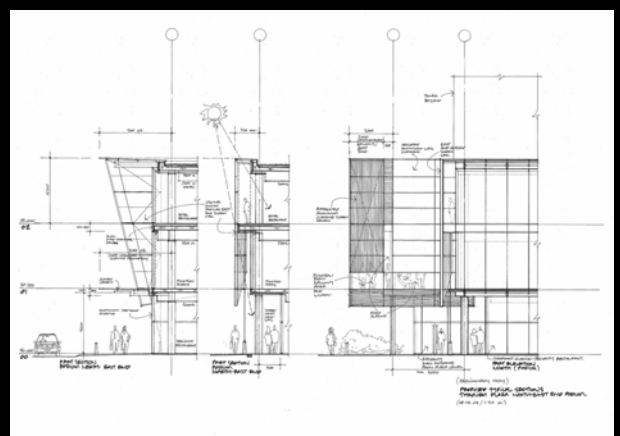
Stephan Reinke Architects



Stephan Reinke Architects

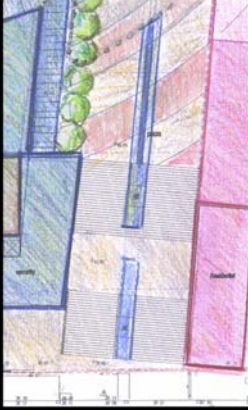


Stephan Reinke Architects



Stephan Reinke Architects

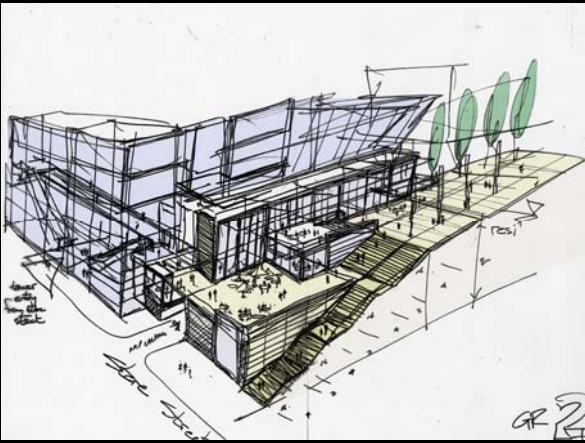
"The Grand Stairs"



Stephan Reinke Architects



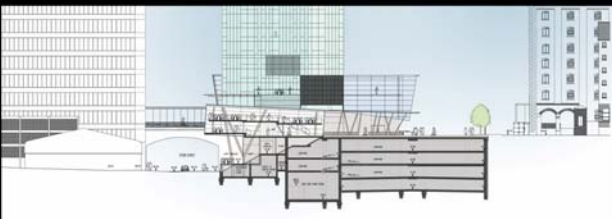
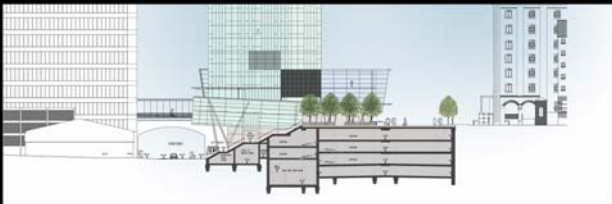
Stephan Reinke Architects



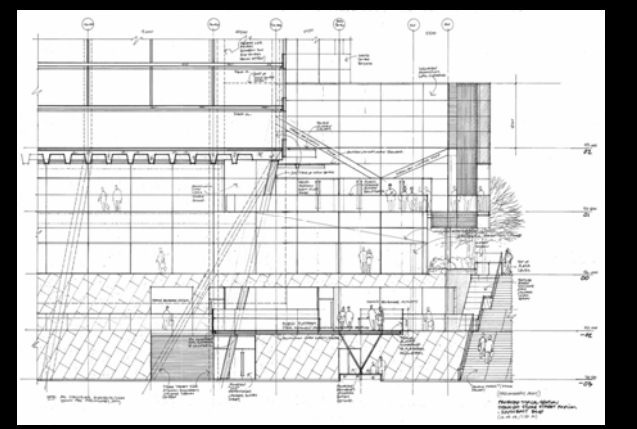
Stephan Reinke Architects



Stephan Reinke Architects

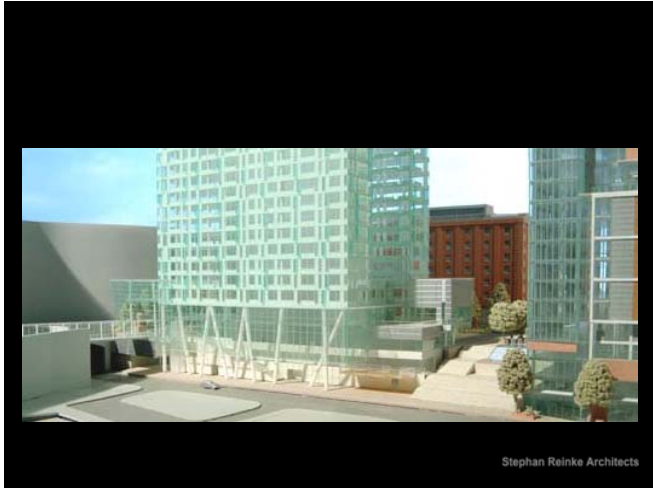
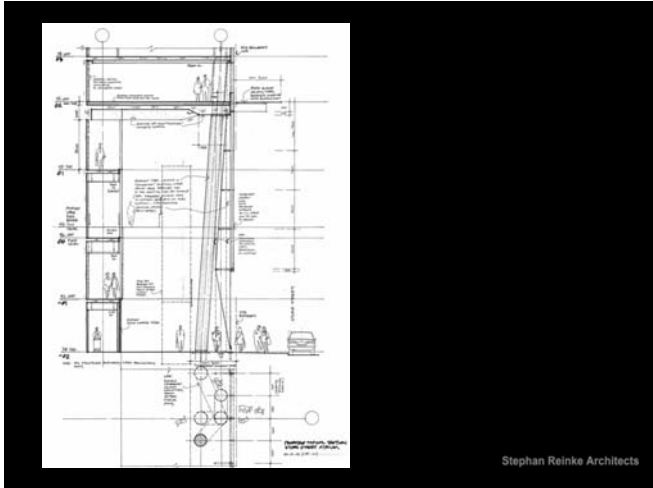
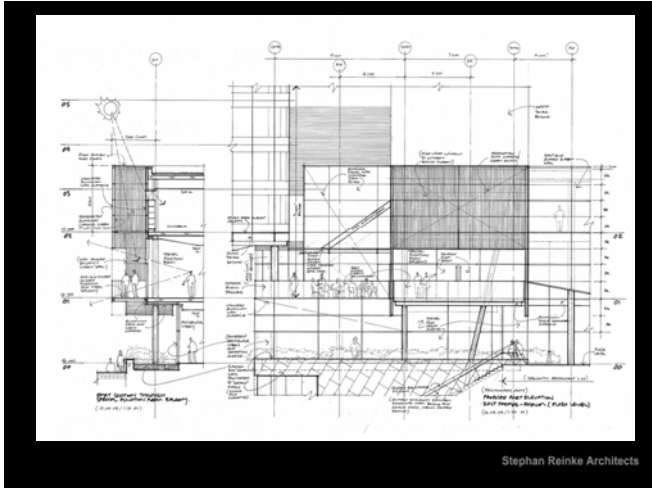


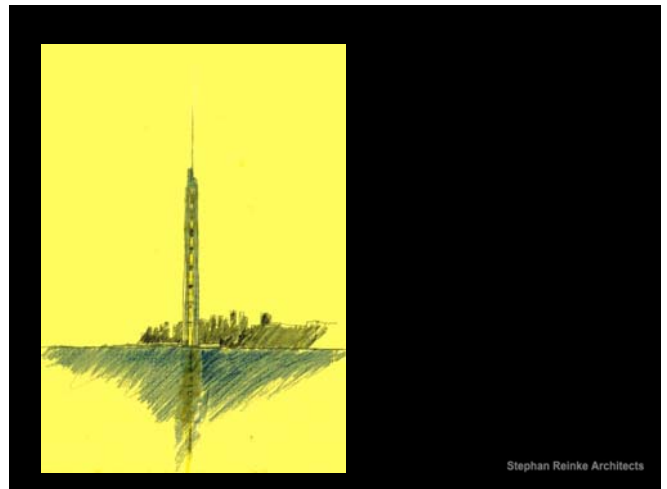
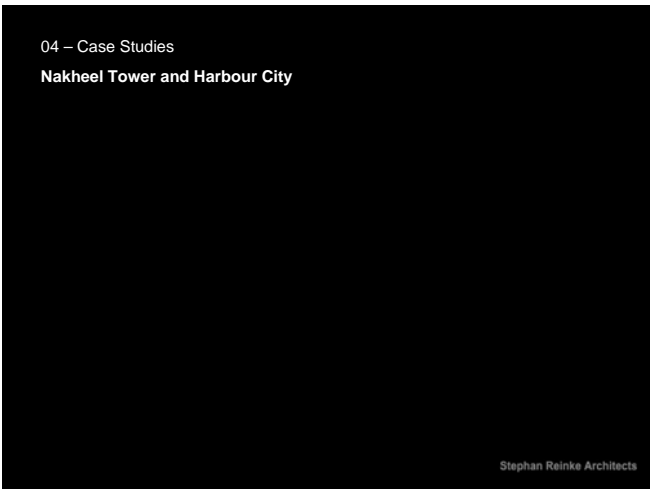
Stephan Reinke Architects



Stephan Reinke Architects

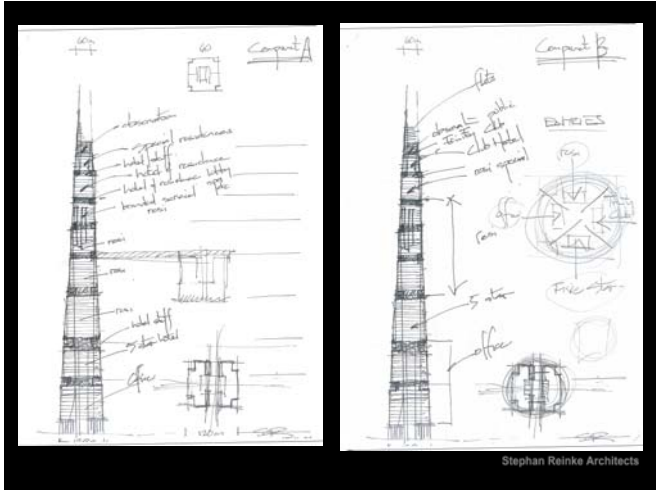








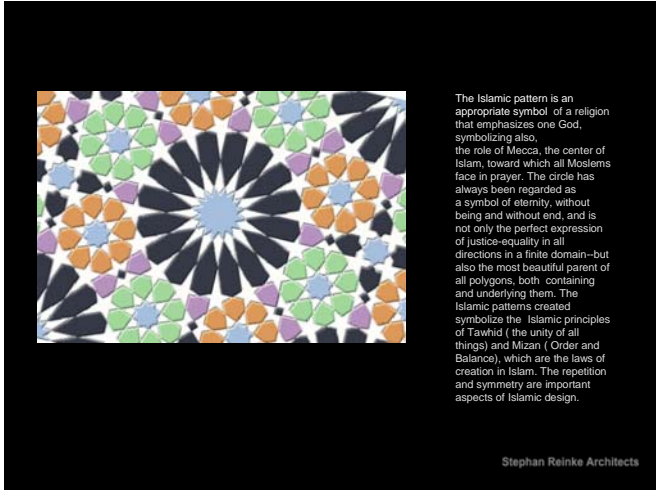
Stephan Reinke Architects



Stephan Reinke Architects

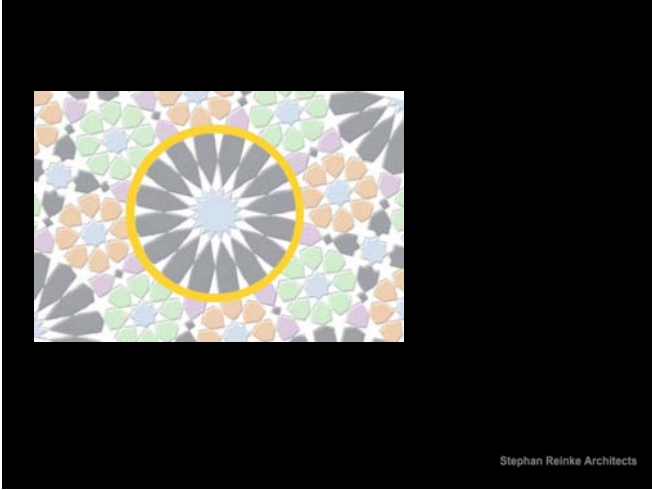


Stephan Reinke Architects

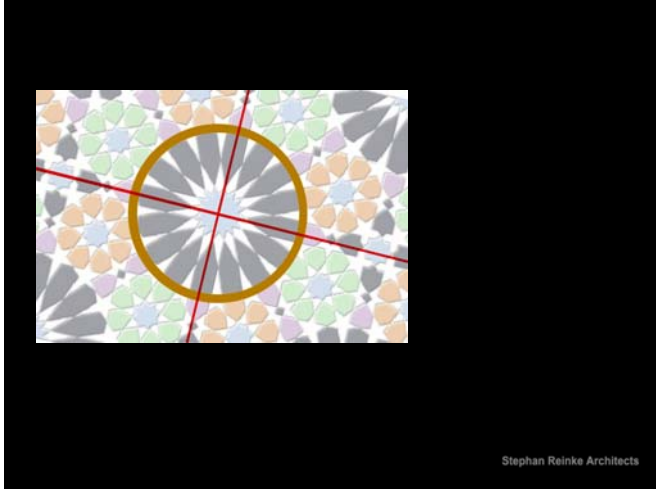


The Islamic pattern is an appropriate symbol of a religion that emphasizes one God, symbolizing also, the role of Mecca, the center of Islam, toward which all Moslems face in prayer. The circle has always been regarded as a symbol of eternity, without being and without end, and is not only the perfect expression of justice-equality in all directions in a finite domain-but also the most beautiful parent of all polygons, both containing and underlying them. The Islamic patterns created symbolize the Islamic principles of Tawhid (the unity of all things) and Mizan (Order and Balance), which are the laws of creation in Islam. The repetition and symmetry are important aspects of Islamic design.

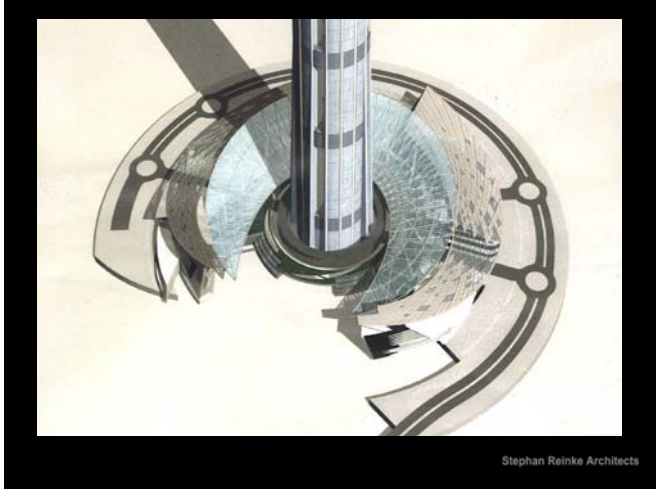
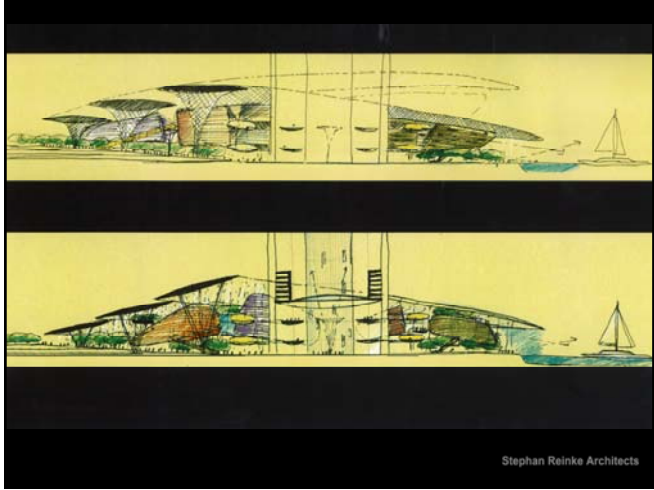
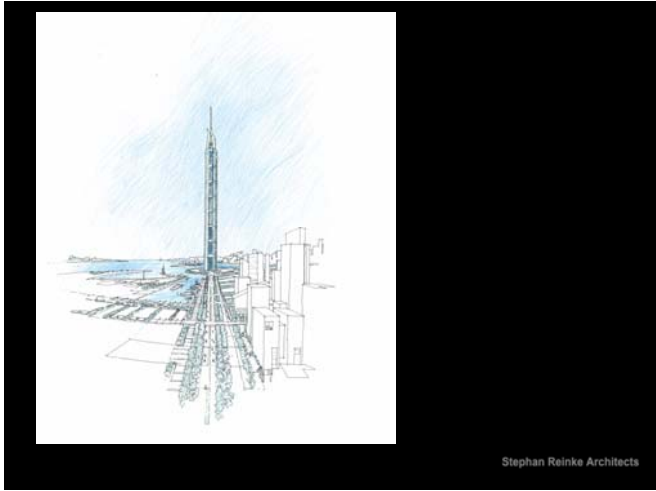
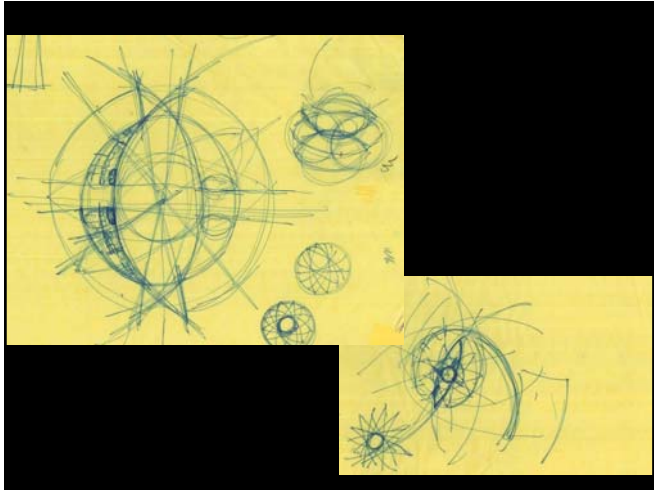
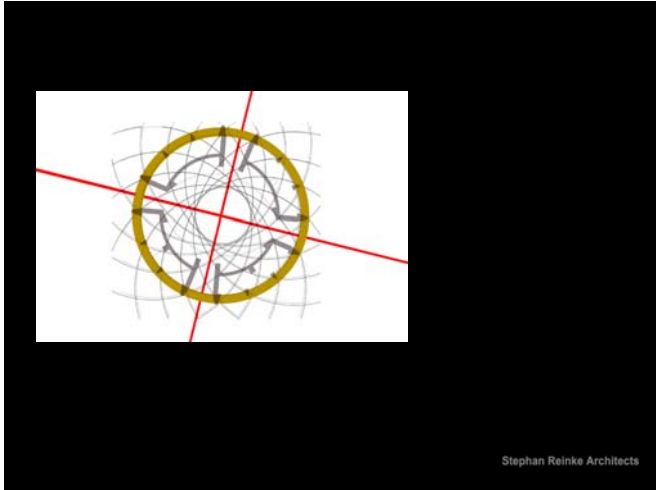
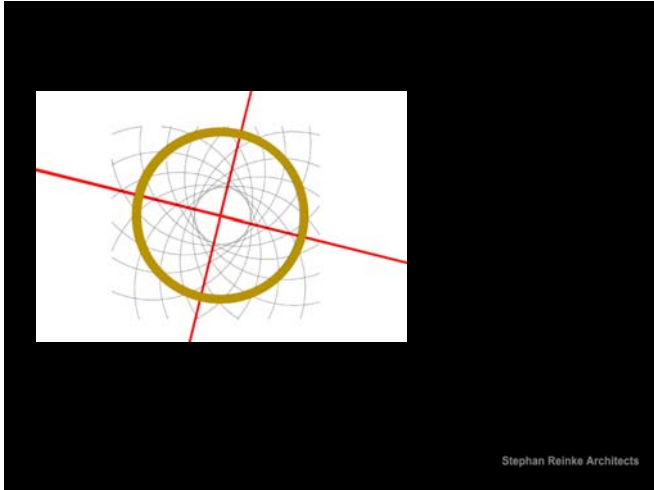
Stephan Reinke Architects

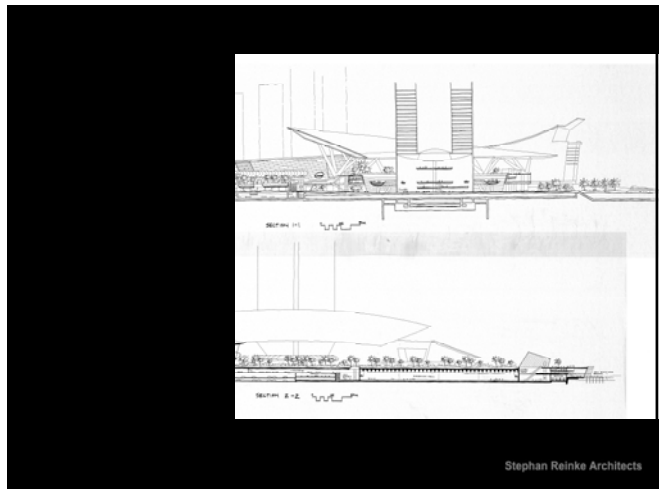
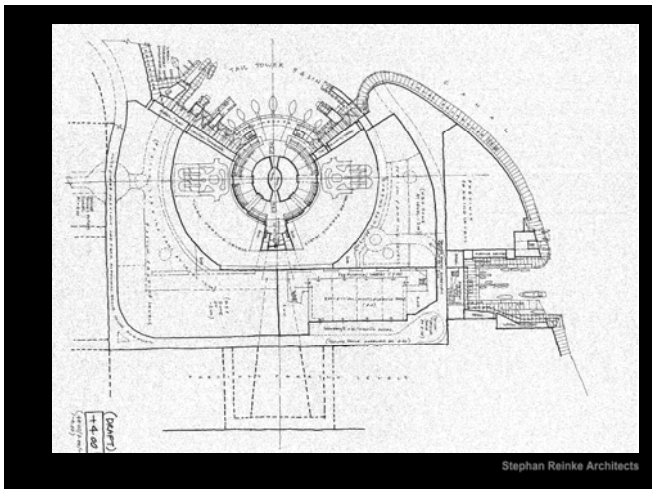
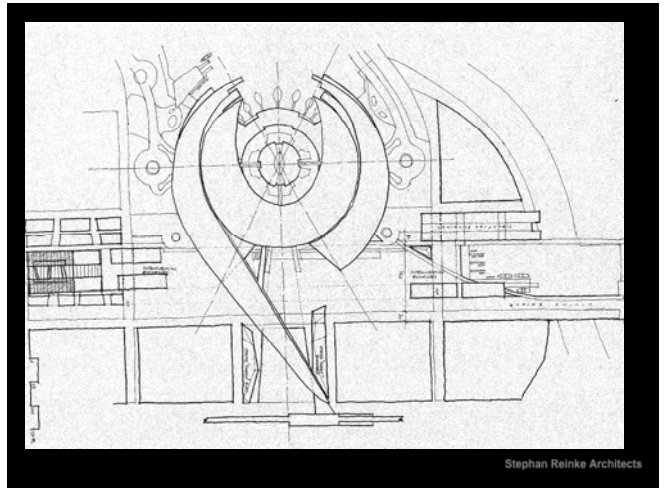


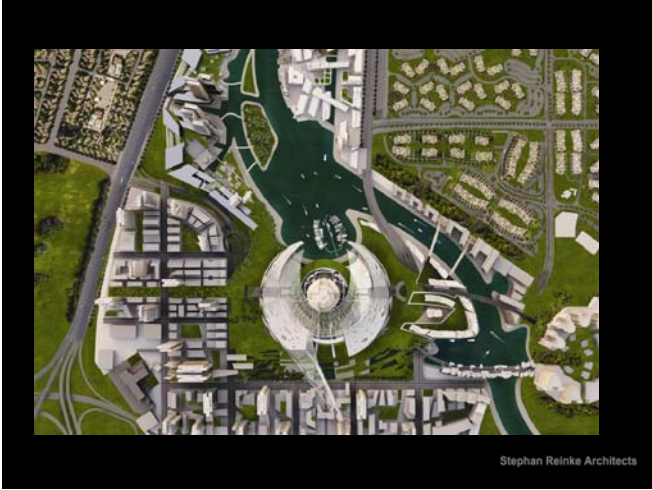
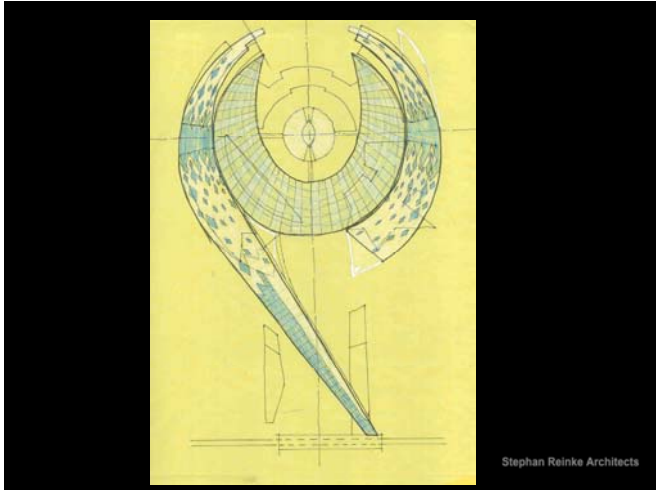
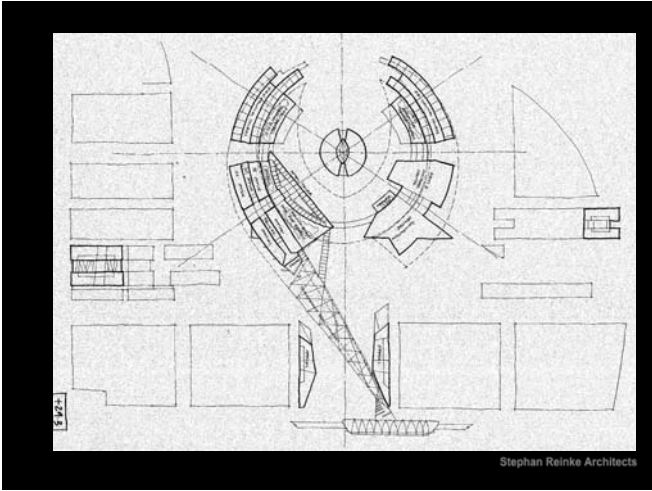
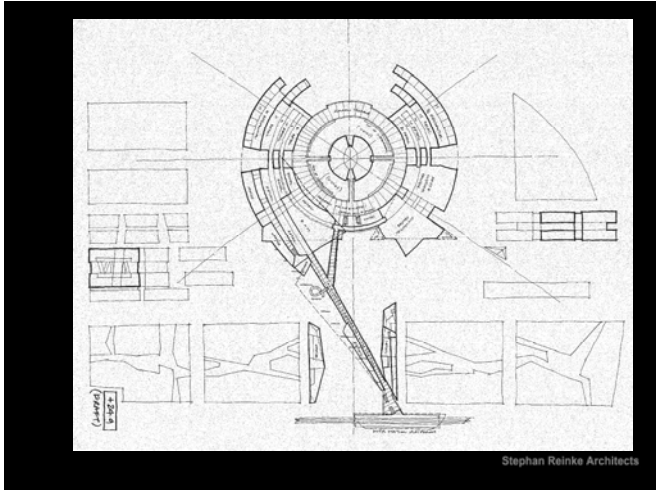
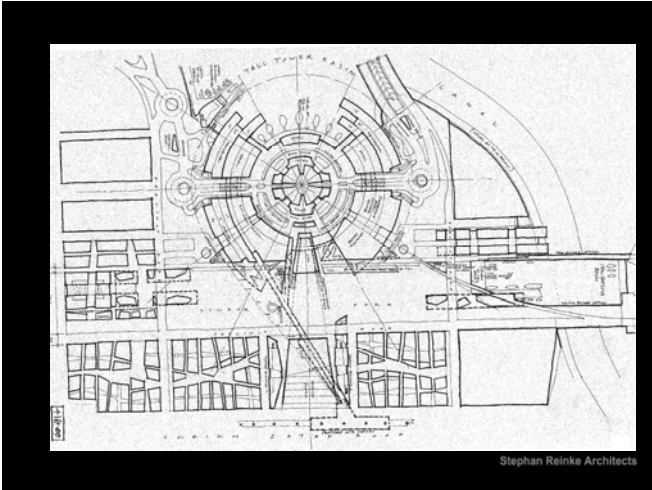
Stephan Reinke Architects



Stephan Reinke Architects

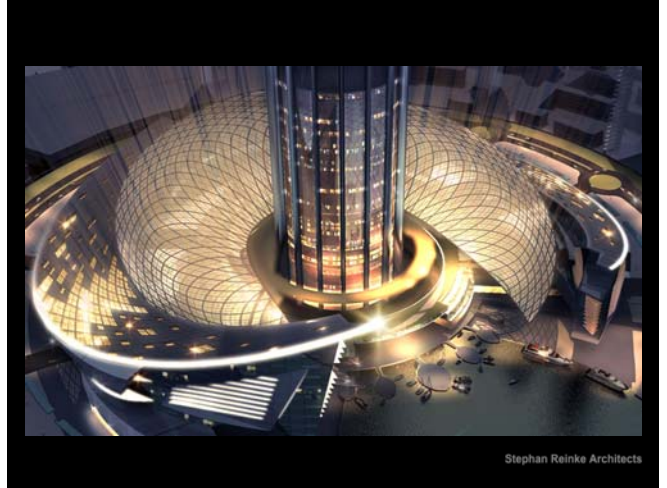




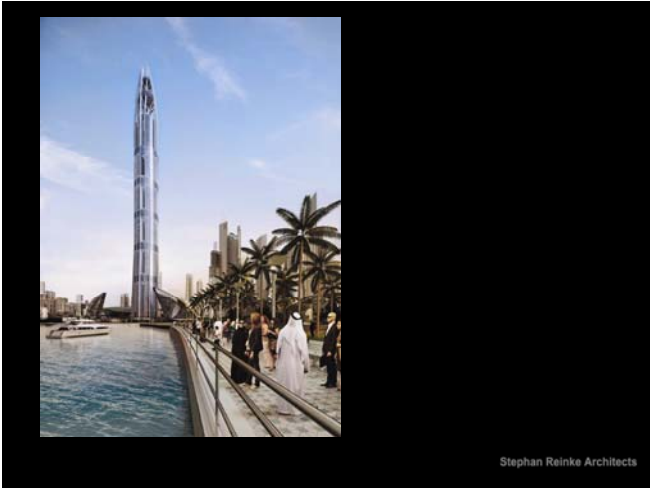




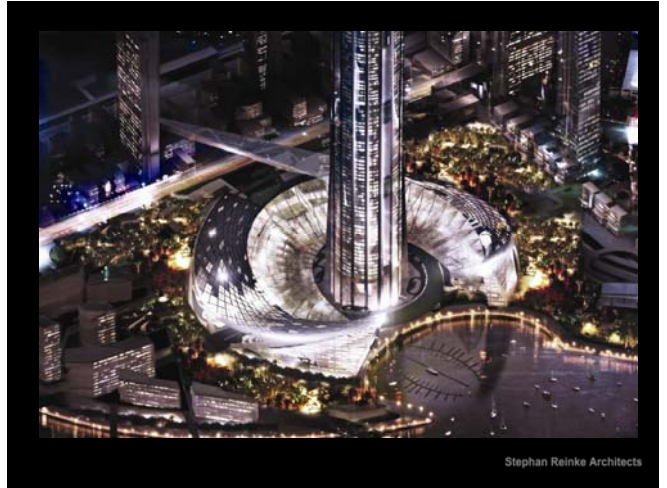
Stephan Reinke Architects



Stephan Reinke Architects



Stephan Reinke Architects



Stephan Reinke Architects



Stephan Reinke Architects



Stephan Reinke Architects

Urban Fabric



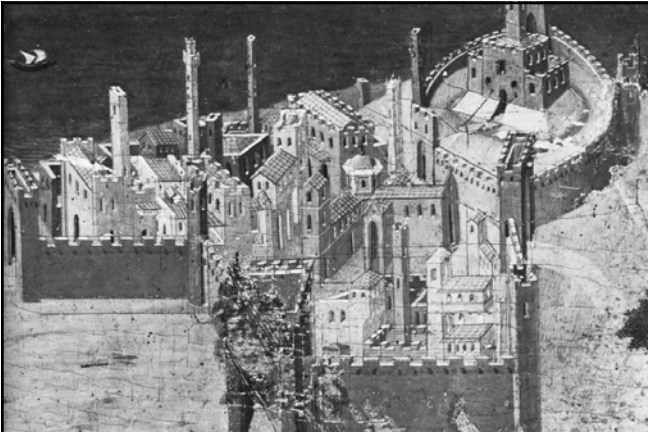
Site Planning, Kevin Lynch

Stephan Reinke Architects

Urban Fabric



Stephan Reinke Architects



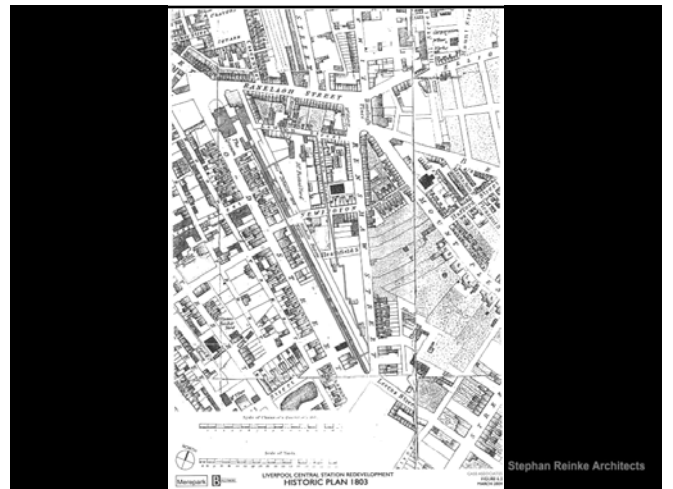
Stephan Reinke Architects



Stephan Reinke Architects

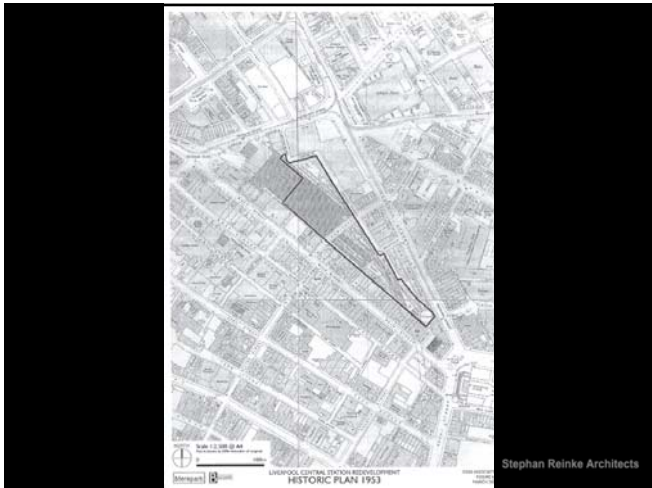
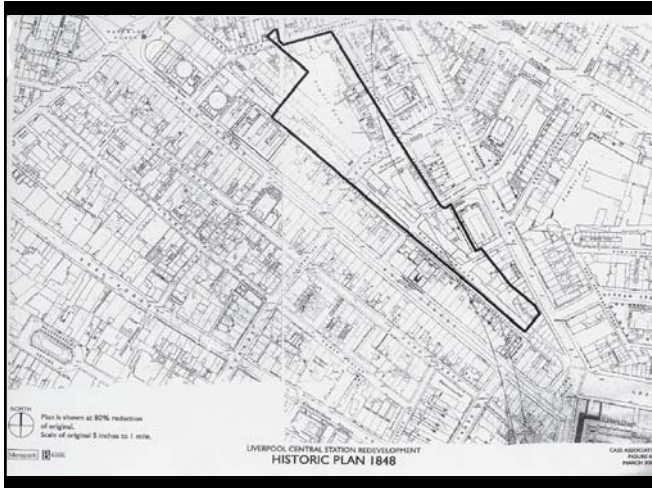


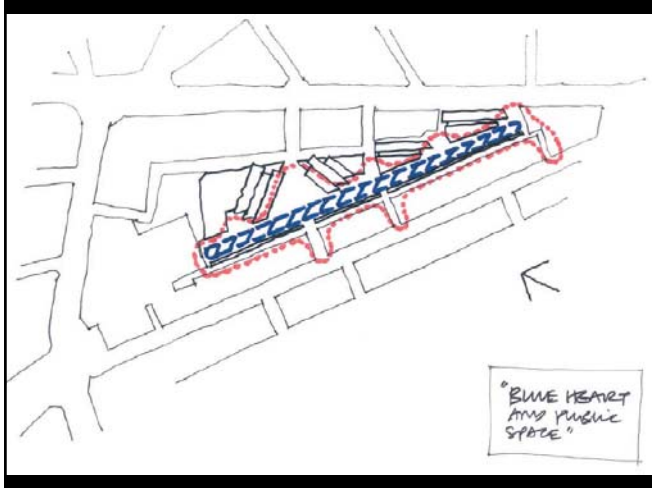
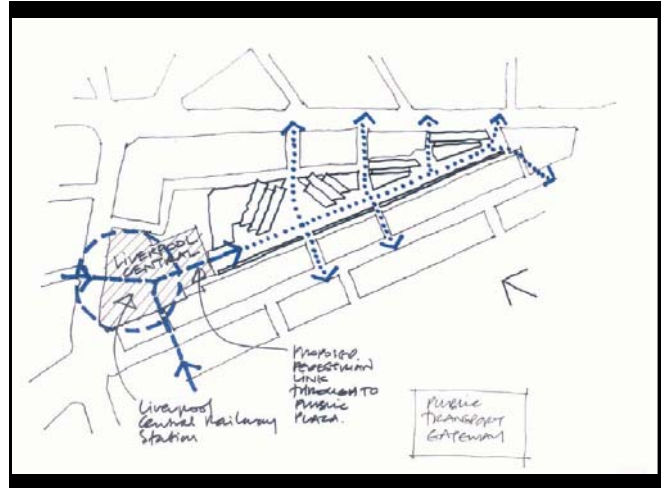
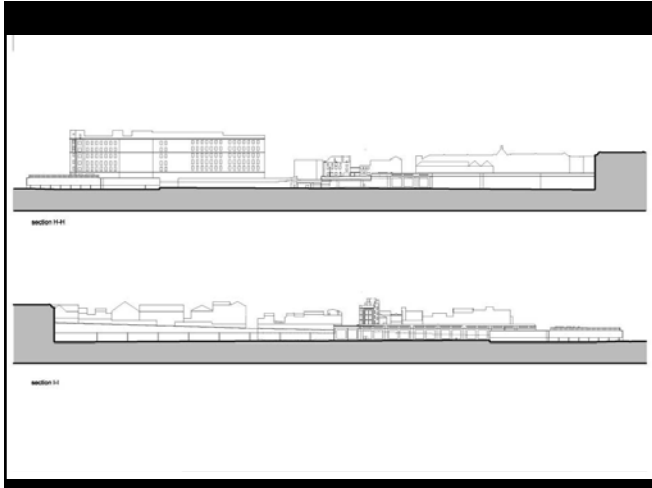
Stephan Reinke Architects



Stephan Reinke Architects

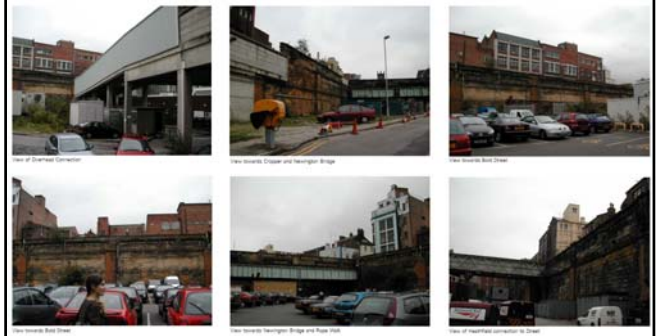








Stephan Reinke Architects



Stephan Reinke Architects



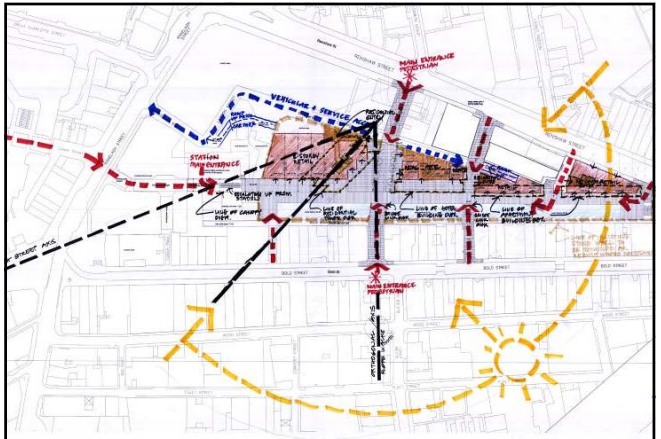
Stephan Reinke Architects



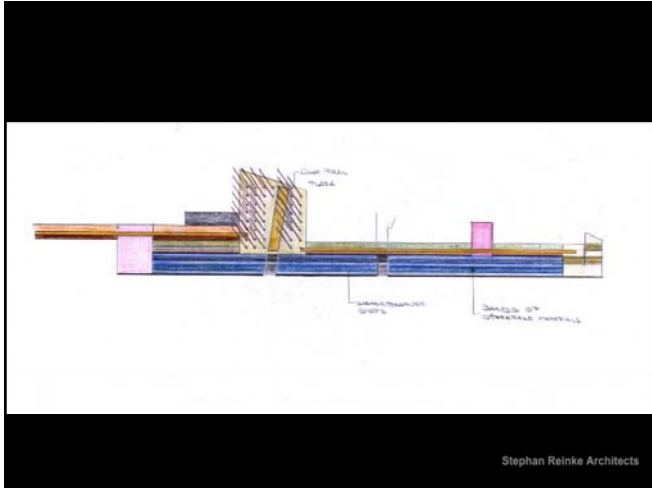
Stephan Reinke Architects



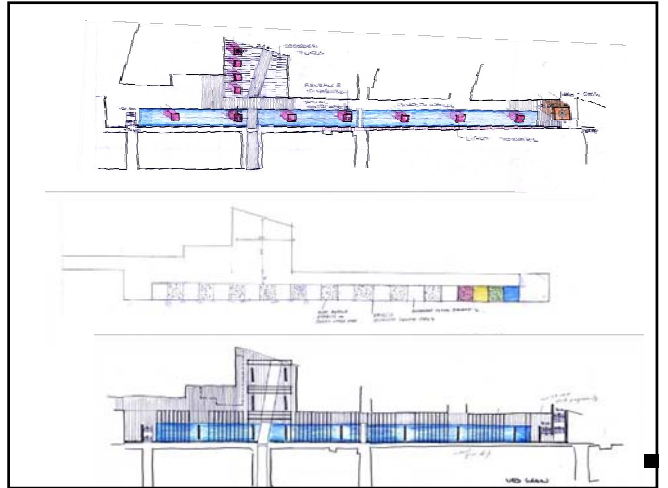
Stephan Reinke Architects



Stephan Reinke Architects



Stephan Reinke Architects



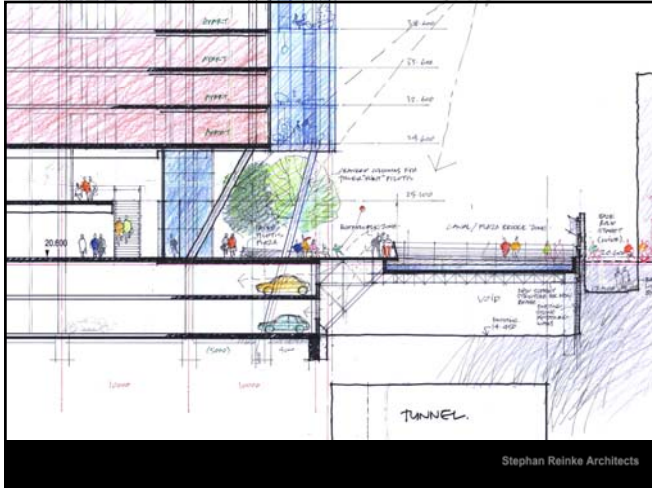
Stephan Reinke Architects



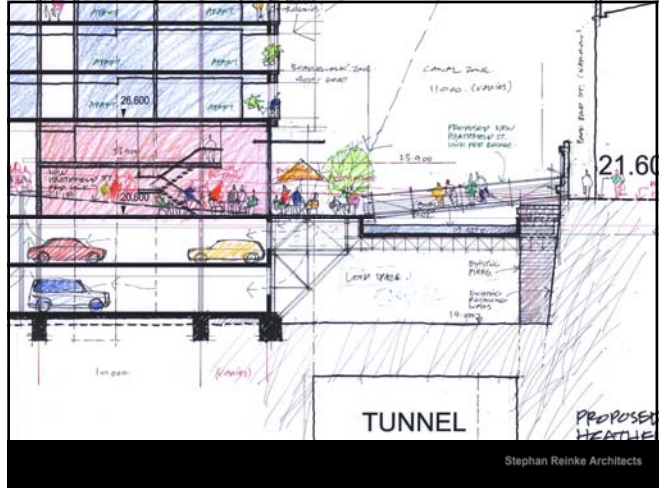
Stephan Reinke Architects



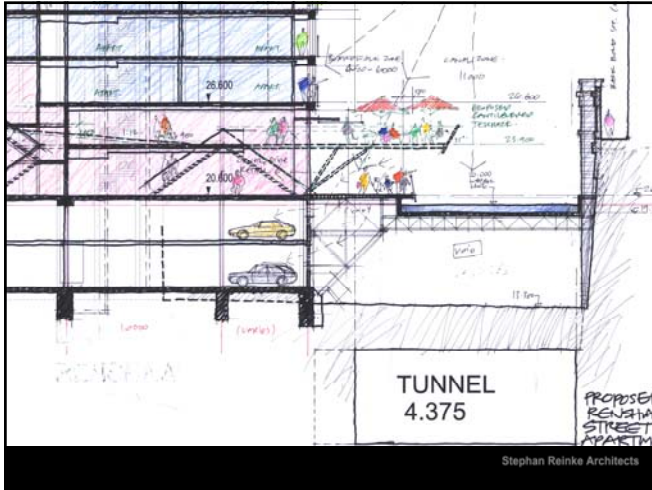
Stephan Reinke Architects

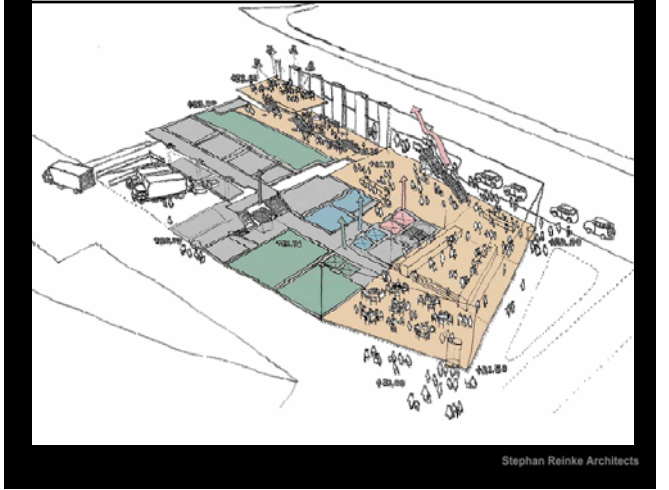
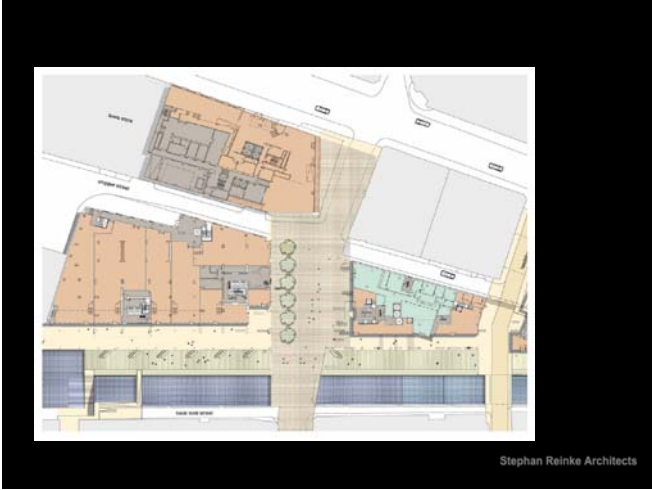
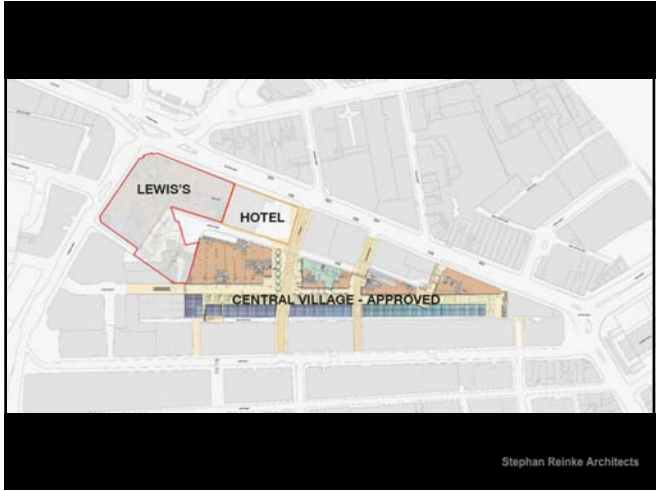


Stephan Reinke Architects



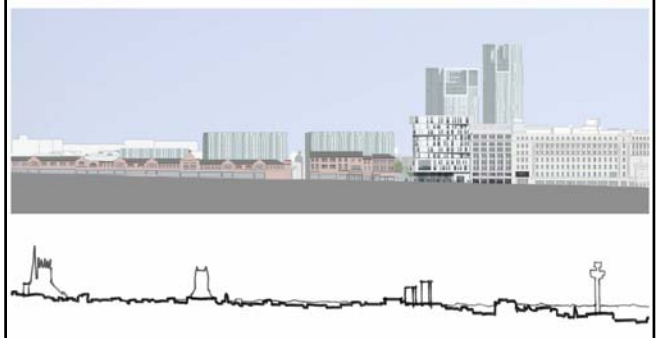
Stephan Reinke Architects







Stephan Reinke Architects



Stephan Reinke Architects



Stephan Reinke Architects



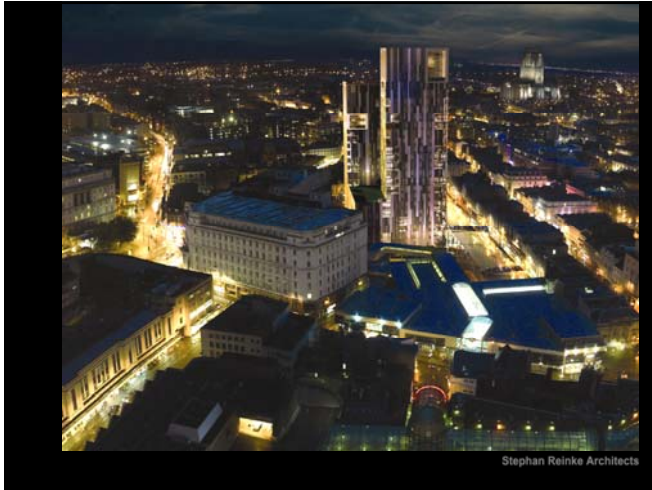
Stephan Reinke Architects



Stephan Reinke Architects



Stephan Reinke Architects



Place Making: Urban Design & the Tall Building  
Cities Designed for People  
Stephan Reinke Architects

Stephan Reinke Architects